



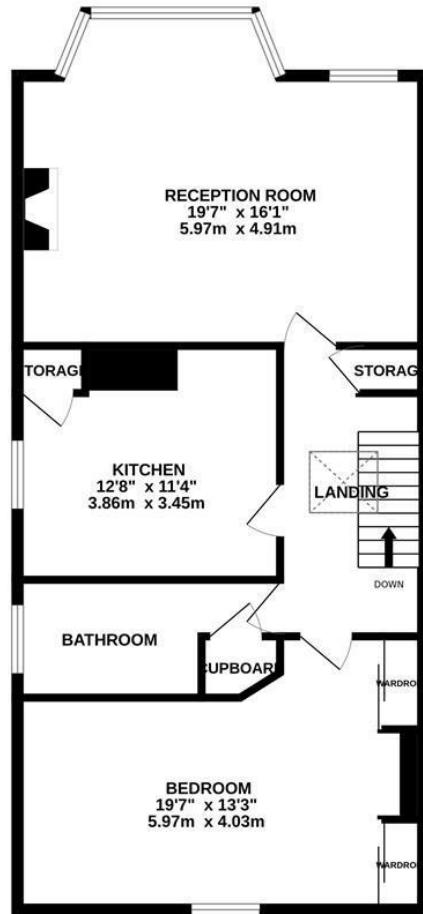
Ashburnham Road, Hastings TN35 5LL

Offers in excess of £175,000



Spacious ONE BEDROOM APARTMENT located in a sought after Clive Vale setting. It's enviably positioned for easy access to Hastings Old Town, Hastings Country Park and nearby primary schools. The accommodation here offers SCOPE FOR POTENTIAL and is arranged as a bright BAY FRONTED LIVING SPACE which measure an impressive 19'7 x 16'1 providing plenty of room for a full dining table while the kitchen is separate and offers ample storage space. The WELL PROPORTIONED DOUBLE BEDROOM spans the rear of the property and features BUILT-IN STORAGE together with a family bathroom. Being sold with the FREEHOLD TO THE BUILDING and NO ONWARD CHAIN, this fantastic property would make the perfect investment opportunity or seaside retreat and is not to be missed.

FIRST FLOOR
801 sq.ft. (74.4 sq.m.) approx.



TOTAL FLOOR AREA : 801 sq.ft. (74.4 sq.m.) approx.

Whilst every attempt has been made to ensure the accuracy of the floorplan contained here, measurements of doors, windows, rooms and any other items are approximate and no responsibility is taken for any error, omission or mis-statement. This plan is for illustrative purposes only and should be used as such by any prospective purchaser. The services, systems and appliances shown have not been tested and no guarantee as to their operability or efficiency can be given.
Made with Metreplex ©2024

